



National Taiwan
Ocean University

What's Inside the Crab

Li Wei-Yu, Hsu Wei-Pin

羅東高商STEAM跨域能力(蟹類映像)

What you know about “CRAB”?

What you know about “CRAB” ?

You should know



(匯鮮市集)

(週末酷客的料理實驗)

Scissorhands?

Color red?

Fxxking tasty?

Let's get to know the crab in the other “color” this time.

For example

When crabs are still pretty “green” like you

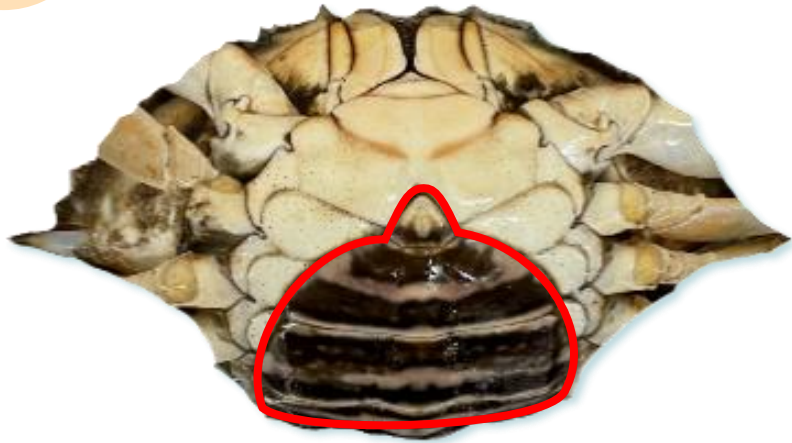
You should know



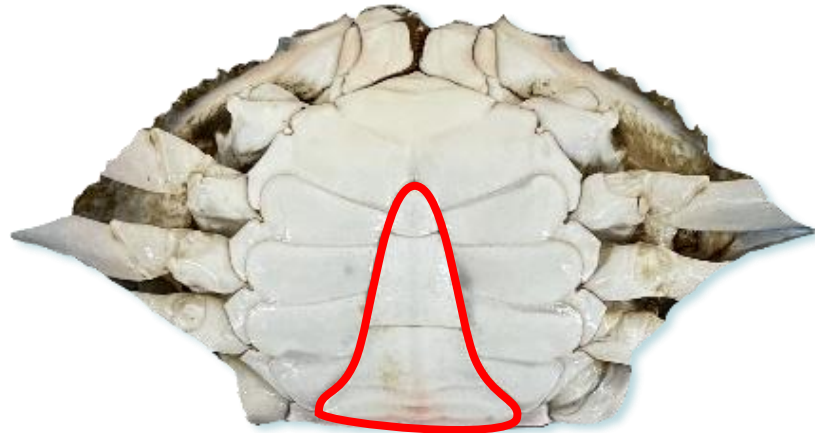
(農業部漁業署)

- 紅星梭子蟹
- *Portunus sanguinolentus*
- 俗稱三點蟹

Let's learn more!



Female



Male

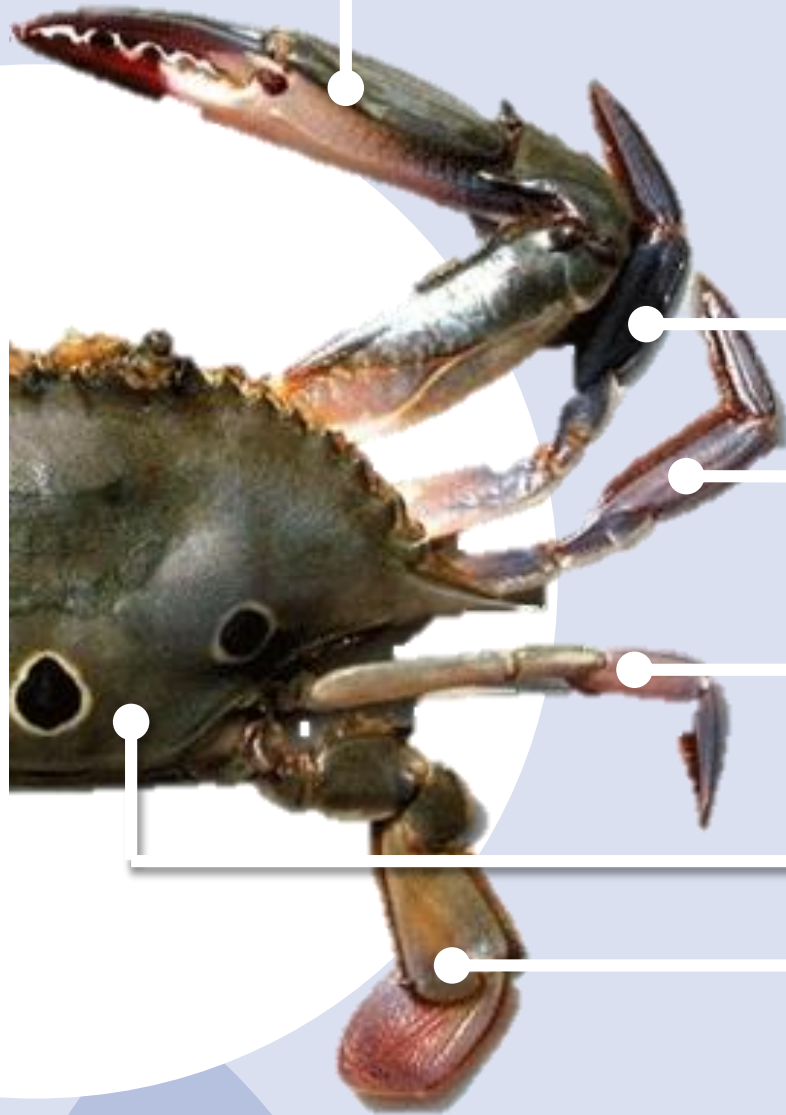
You should know

claw

walking legs

carapace

swimming leg

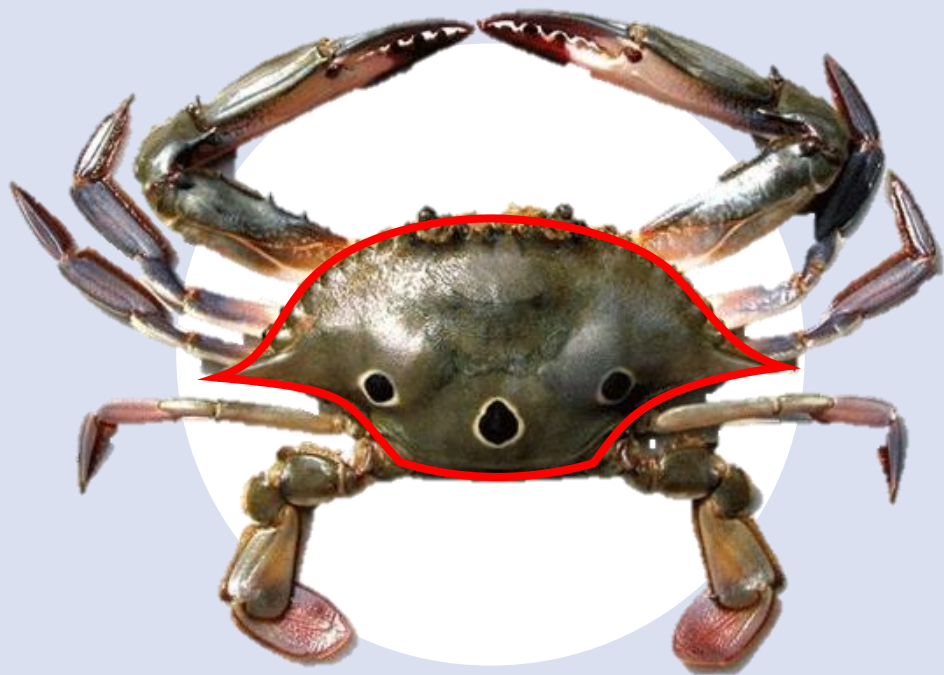


(農業部漁業署)

Carapace Measurement

A little more

Carapace Width



Carapace Length



Carapace Height

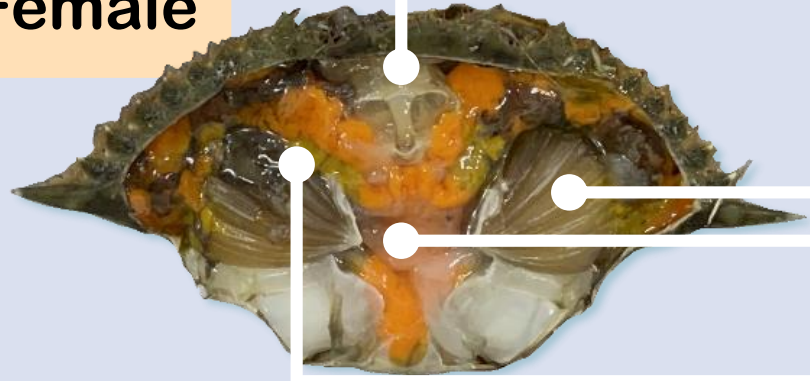


(農業部漁業署)

Just very close

What's inside the crab?

Female



stomach

You're inside now

gills

heart

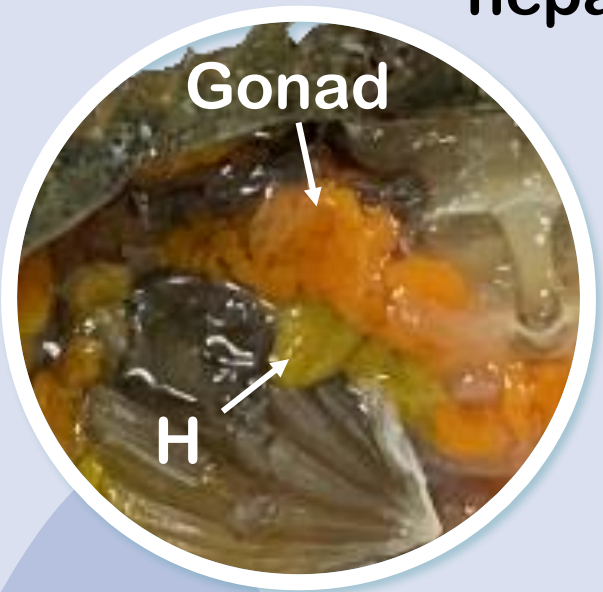
hepatopancreas (H)



Gonad

H

Male



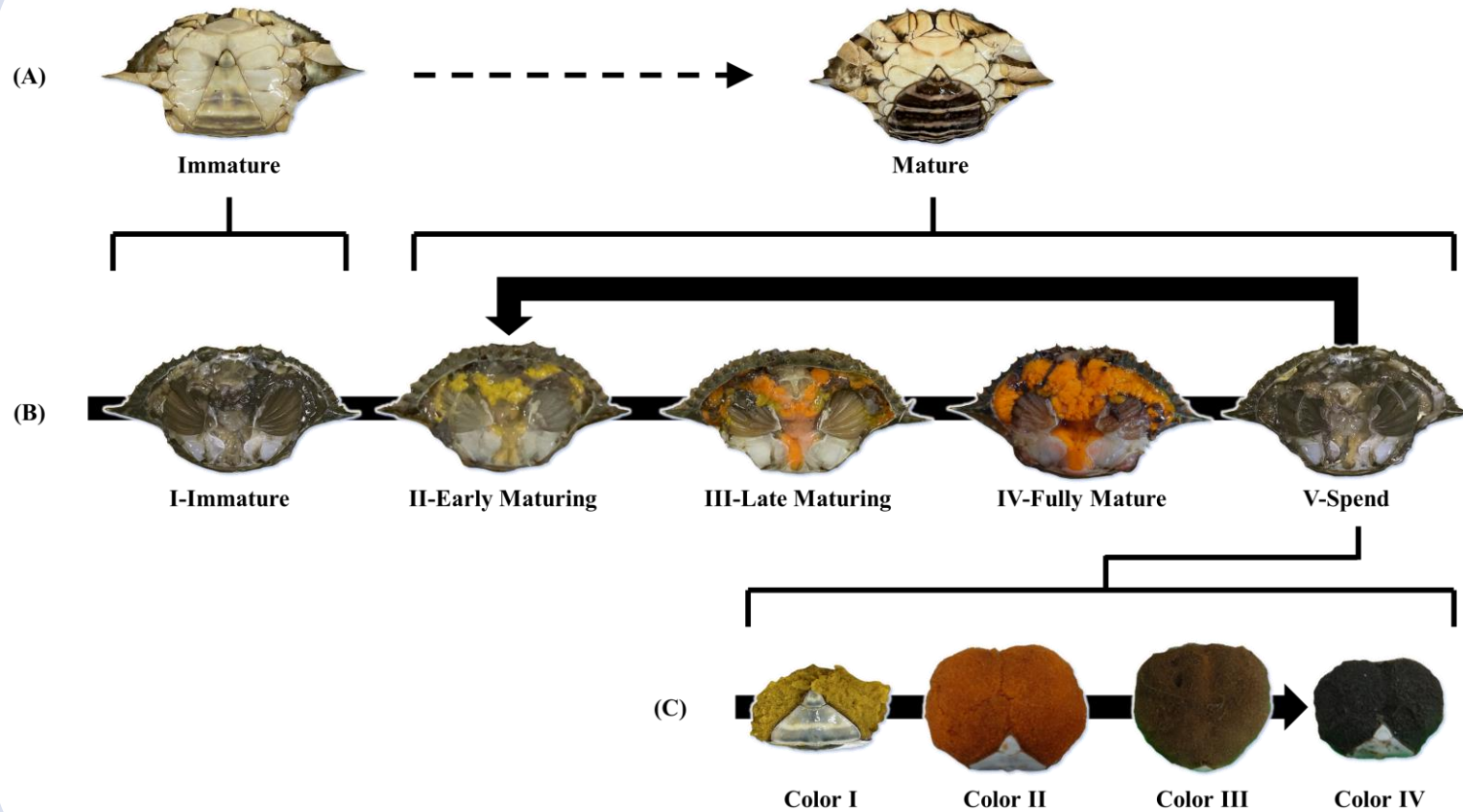
Gonad

H

成熟階段	生殖腺外觀	腹甲狀態與卵塊外觀
Immature	卵巢細小，呈透明狀，卵粒肉眼不可見	腹甲緊閉，呈三角形
Early Maturing	卵巢開始變大，稍透明，呈淡粉或淡黃色，無明顯卵粒	
Late Maturing	卵巢稍微膨大，呈橘色，卵粒可見	腹甲緊閉，呈圓弧狀
Fully Mature	卵巢大且飽滿，幾乎充滿整個甲殼，呈橘色，卵粒可見	
Spend	交配後卵粒開始與儲精囊的精子行受精作用並排出，卵巢外觀與II-IV階段相像	腹側抱卵，卵塊依成熟程度按黃、橘、棕、黑轉變顏色，產卵後腹甲鬆弛、腹肢外露

You're inside now



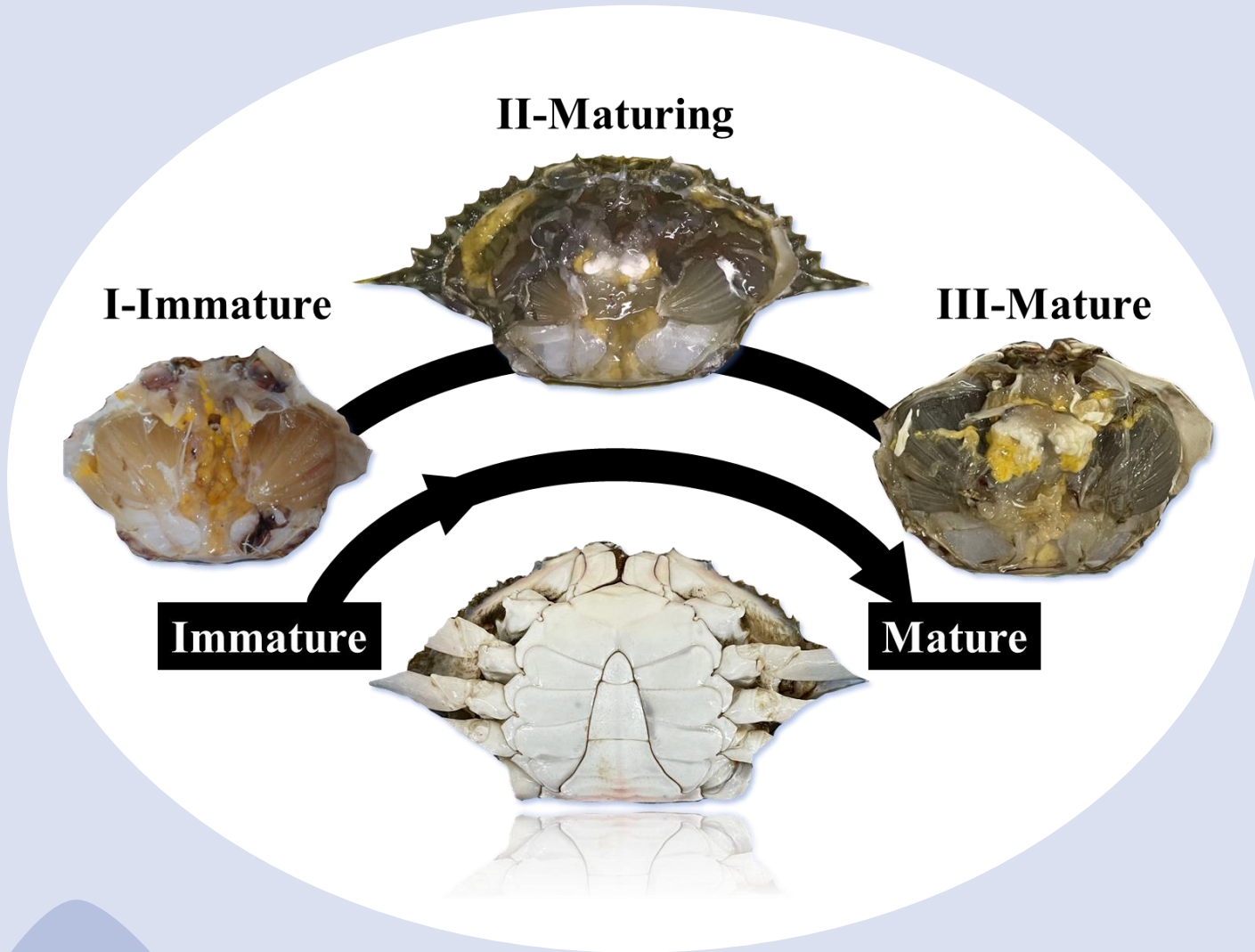


◆ 未成熟及成熟雌蟹之(A)腹甲型態、(B)生殖腺發育階段變化與(C)成熟雌蟹抱卵卵塊顏色變化。

成熟階段	生殖腺外觀	腹甲外觀
Immature	精巢與輸精管肉眼難見，輸精管呈透明絲狀	
Maturing	精巢捲曲呈白色；輸精管細小，盤繞於心臟與胃之間	腹甲呈尖三角形
Mature	精巢膨脹飽滿，呈乳白色；輸精管腫脹捲曲，呈灰白色	



You're inside now



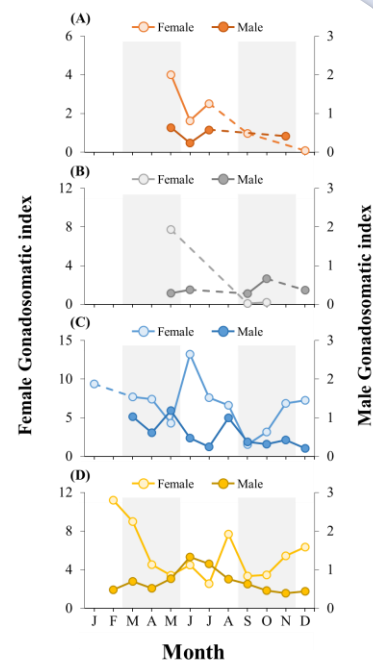
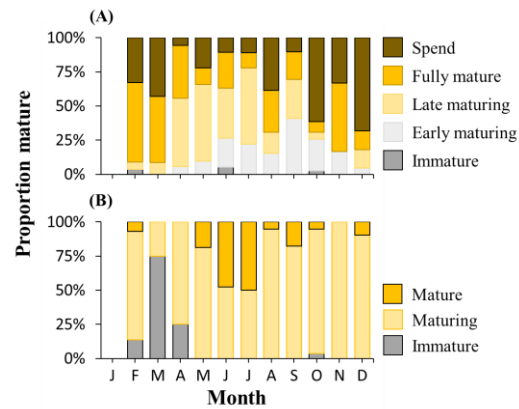
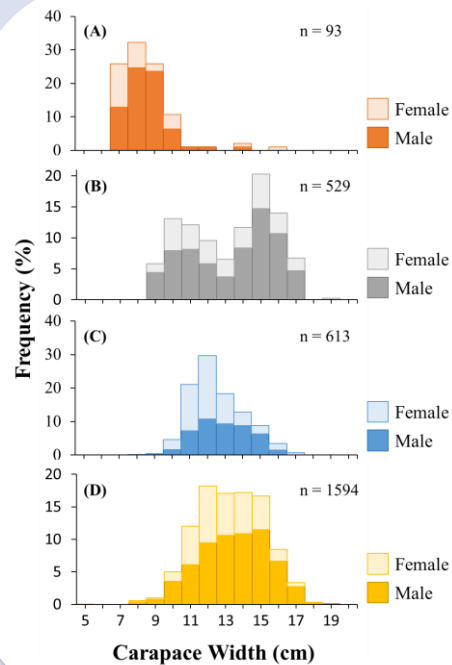
- ◆ 雄蟹之腹甲型態與生殖腺發育階段變化。

**What we can do with these
information?**

Can make some coooool figure, and become “Crab Master”!

Crab Master

- ◆ 這些測量資料可以用來了解重要生物學信息，並作為相關管理規範之參考依據。



I know you guys already feel boring now, so...

Let's get started!

The background features abstract, overlapping shapes in shades of blue and grey. A large blue shape is on the left, a grey shape is in the center, and another blue shape is on the right. The text "Let's get started!" is centered horizontally and underlined with a thin orange line.